



2022

POLY PRODUCT CATALOG

AWESOME AUDIO AND VIDEO PRODUCTS



TABLE OF CONTENTS

COMMAND THE CONVERSATION	3
POLY END-TO-END SOLUTIONS	4
PRODUCTS	
AT THE DESK – AT HOME OR IN THE OFFICE	5
ON THE GO	19
HUDDLE SPACE	23
CONFERENCE ROOM	26
CALL CENTER – AT HOME OR IN THE OFFICE	34
IT TOOLS	37
SUPPORT, PROFESSIONAL AND MANAGED SERVICES	40



COMMAND THE CONVERSATION

Poly creates premium audio and video products so you can have your best meeting — anywhere, anytime, every time. Our headsets, video and audio conferencing products, desk phones, and analytics software are beautifully designed and engineered to connect people with incredible clarity. Our services are designed to support your goals by removing hassle and adding value to any Poly product. Expect pro-grade, easy to use solutions that work seamlessly with all the best video and audio conferencing services.

With Poly, you'll do more than just show up, you'll stand out.

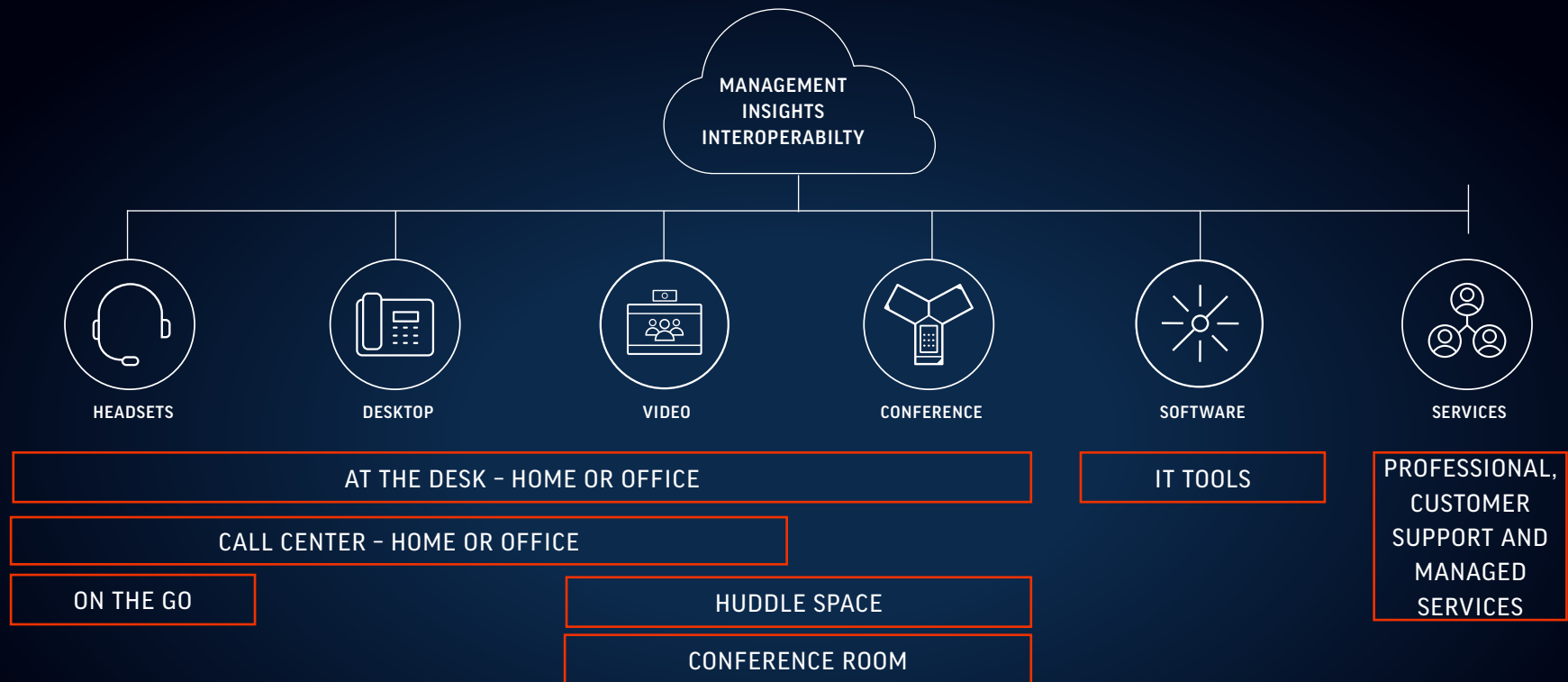


BEST END-TO-END COLLABORATION EXPERIENCE. PERIOD.

- Everywhere the communications and collaboration experience touch the individual, we're there. We make your connections simple and your interactions lifelike, so your collaboration is human to human—the technology fades into the background.
- We provide vital management ensuring devices are up and running with maximum efficiency. Raw data is aggregated into intelligent insights that identify usage trends that benefit all aspects of business collaboration.
- Our service experts provide the breadth of help your organization needs from planning and design, deployment, optimization, support, and management of your environment.

OUR VALUE TO OUR CUSTOMERS AND PARTNERS

- **Business leaders**—More ways to improve communication and collaboration, and thus improve productivity and the bottom line.
- **IT managers**—One-stop shopping for all your communication device needs with insights that help anticipate maintenance needs, solve problems remotely, and reveal the ways users interact with their systems and work environment.
- **Business partners**—A reliable partner who understands and complements your business, giving our combined customers more of what they want.



AT THE DESK

AT HOME OR IN THE OFFICE



IDEAL FOR

Professionals in the distracting open office/home office looking for a premium solution



BLACKWIRE 8225

- Flexible, noise-canceling microphone with Poly Acoustic Fence technology.
- Advanced hybrid active noise canceling (ANC) with three settings to optimize.
- On-call indicator lets others know when you're on a call.
- USB-A or USB-C connectivity.
- Zoom compatible.
- Supported by Poly Lens.

IDEAL FOR

High call volume knowledge workers needing a corded headset for PC telephony



BLACKWIRE 5200 SERIES

- Connects to PC and Mac via USB-A/USB-C, smartphone, and tablet via 3.5 mm.
- Intuitive inline controls to answer/end calls, control volume, and mute.
- Dynamic EQ feature automatically adjusts audio for voice and multimedia use.
- Zoom compatible.
- Supported by Poly Lens.

IDEAL FOR

Knowledge workers who need a modern, stylish corded headset for PC telephony



BLACKWIRE 3300 SERIES

- Features great audio and a modern design.
- Mobile connectivity with USB-A/USB-C with 3.5 mm (BW3315/BW3325).
- Intuitive inline controls for call answer/end, mute, volume +/-.
- Supports long-wearing comfort with a comfortable, padded headband and soft ear cushions.
- Zoom compatible.
- Supported by Poly Lens.

AT THE DESK

DECT™ WIRELESS HEADSETS

IDEAL FOR

Enterprise and call center professionals who need to connect to desk phones, PCs, and/or mobile devices



SAVI 8200 OFFICE SERIES

- Three-way connectivity base – computer, desk phone, and mobile calls.
- Only DECT™ headset with active noise canceling (Savi 8220).
- Noise-canceling microphone with close conversation limiting.
- Convertible option available (Savi 8240/ Savi 8245).
- Zoom compatible.

IDEAL FOR

Enterprise and call center professionals who need to connect to PCs only



SAVI 8200 UC SERIES

- One-way only connectivity – computer.
- Only DECT™ headset with active noise canceling (Savi 8220).
- Compact USB adapter and travel case for portability.
- Noise-canceling microphone with close conversation limiting.
- Convertible option available (Savi 8240/ Savi 8245).
- Zoom compatible.
- Supported by Poly Lens.

IDEAL FOR

Ideal for use in financial, medical, and government, where Bluetooth® technology is typically banned



SAVI 7300 OFFICE SERIES

- Two-way connectivity – computer and desk phone.
- Designed to meet the DECT™ Security Step C—the highest security level from DECT™ Forum.
- Up to 2x more density than other DECT™ headsets.
- First Poly Microsoft Teams certified DECT™ headset with dedicated Microsoft Teams button.
- Noise-canceling microphone with Poly Acoustic Fence technology.
- Zoom compatible.
- Supported by Poly Lens.

IDEAL FOR

Office workers who need workspace, headset mobility, range and connectivity



SAVI 7200 OFFICE SERIES

- One-way only connectivity – desk phone.
- Roaming range up to 120 m/394 ft.
- Up to 12 hours of talk time with each charge.
- Conference up to four headsets on a single base.
- Noise-canceling microphone.

AT THE DESK

BLUETOOTH WIRELESS HEADSETS

IDEAL FOR

Office and home office professionals who need a premium stereo Bluetooth headset



NEW



VOYAGER FOCUS 2 UC SERIES

- Connect to a computer with the included BT700 adapter and to a mobile via Bluetooth v5.1.
- Keep your headset fully charged at all times using a desktop charging stand.
- Three levels of Advanced Digital Hybrid Active Noise Canceling (ANC).
- Advanced multiple microphone noise canceling with Acoustic Fence technology in a discreet boom.
- Ultra-comfortable headband and plush ear cushions.
- Supported by Poly Lens.

IDEAL FOR

Office and home office professionals who need a premium stereo Bluetooth headset



CUSTOMER FAVORITE



VOYAGER FOCUS UC

- Active noise canceling (ANC) helps block sounds in noisy environments.
- Smart sensors route, auto-answer, and auto-mute calls.
- Hi-fi stereo sound creates a more immersive experience.
- Dynamic mute alert feature alerts when you try to talk while muted.
- Zoom compatible.
- Supported by Poly Lens.

IDEAL FOR

Office and mobile professionals who prefer the freedom of hands-free calls all day at home or in the office



VOYAGER 4300 OFFICE SERIES

- Connect to your desk phone (with optional Voyager Office base), PC/Mac or your mobile phone with Bluetooth.
- Range up to 50 m/164 ft (line of sight) using Class 1 Bluetooth technology.
- Choice of USB-A or USB-C connectivity.
- Stay connected all day with charging base options.

AT THE DESK

BLUETOOTH WIRELESS HEADSETS

IDEAL FOR

Office and mobile professionals who want to make and take calls hands free in and out of the office



VOYAGER 5200 OFFICE SERIES

- Connect to your desk phone, PC/Mac or your mobile phone with Bluetooth.
- Range of up to 75 m/250 ft (line of sight) using Class 1 Bluetooth technology.
- Choice of USB-A or USB-C connectivity.
- Stay connected all day with charging base options.
- Zoom compatible.

IDEAL FOR

Users who want the simplicity of one integrated device that delivers everything needed for video calls from a PC or Mac



IDEAL FOR

A premium video and audio experience from an enclosed personal workspace



IDEAL FOR

Users who want a big upgrade over a laptop or monitor camera at an affordable price



POLY STUDIO P21

- High-performance enterprise-grade display.
- Adjustable, dynamic ambient lighting.
- Exceptional camera optics.
- Easy-to-connect USB device.
- Wireless mobile phone charging.
- Stereo speakers and directional microphone
- Integrated privacy shutter.
- Supported by Poly Lens.



POLY STUDIO P15

- High-performance 4K image sensor.
- Automatic low-light compensation.
- Automatic camera framing.
- Integrated privacy shutter.
- Powerful integrated speaker and multi-microphone array.
- Poly NoiseBlockAI and Acoustic Fence.
- Supported by Poly Lens.



POLY STUDIO P5

- Exceptional camera optics.
- Automatic low-light compensation.
- Built-in directional microphone.
- Integrated privacy shutter.
- Small and rugged for portability.
- USB connection to wireless Bluetooth headset adapter.
- Supported by Poly Lens.

IDEAL FOR

The high-performance professional with an enclosed workspace



POLY STUDIO P5 KIT WITH POLY SYNC 20+

- Exceptional camera optics.
- Brilliant colors and automatic low-light compensation.
- Speakerphone wireless adapter connects directly to webcam.
- Full duplex audio and three-microphone steerable array.
- Bass reflex system with dual passive radiators.
- Up to 20 hours of speakerphone battery life.
- Supported by Poly Lens.

IDEAL FOR

Professional who needs high-performance while still having the freedom to move



POLY STUDIO P5 WITH VOYAGER 4220 UC

- Exceptional camera optics.
- Brilliant colors and automatic low-light compensation.
- Headset wireless adapter connects directly to webcam.
- Crisp stereo audio and noise-canceling dual headset mics.
- Class 1 v5.0 Bluetooth® roaming for greater range and flexibility.
- Supported by Poly Lens.

IDEAL FOR

Ideal for the work-from-anywhere professional needing high-performance calls at an affordable price



POLY STUDIO P5 WITH BLACKWIRE 3325

- Exceptional camera optics.
- Brilliant colors and automatic low-light compensation.
- Features great audio and a modern design.
- Intuitive inline controls for call answer/end, mute, volume +/-.
- Supports long-wearing comfort with a comfortable, padded headband and pillow soft ear cushions.
- Supported by Poly Lens.

IDEAL FOR

Ideal for the multi-tasking professional to stay tuned into your surroundings



POLY STUDIO P5 WITH BLACKWIRE 3210

- Exceptional camera optics.
- Brilliant colors and automatic low-light compensation.
- Single-ear wearing style to stay tuned into the surrounding environment.
- High-quality audio and noise-canceling mics.

IDEAL FOR

Knowledge workers and managers who place a moderate amount of calls or small offices who desire a modern multi-line desk phone



POLY EDGE B30

- 4 line keys; 16 lines supported.
- Poly HD Voice and hands-free speakerphone with proven acoustic echo cancellation and background noise suppression technology.
- Lightbar status indicator.
- Illuminated mute, headset, speaker buttons.
- Easy installation on desk or wall with 2-position desk stand and included wall mount hardware.
- Power over Ethernet.
- Supported by Poly Lens.

IDEAL FOR

Office professionals, frontline staff, and retail clerks who need a modern and reliable wired telephone



POLY EDGE B20

- 2 line keys; 8 lines supported.
- Poly HD Voice and hands-free speakerphone with proven acoustic echo cancellation and background noise suppression technology.
- Lightbar status indicator.
- Illuminated mute, headset, speaker buttons.
- Easy installation on desk or wall with 2-position desk stand and included wall mount hardware.
- Power over Ethernet.
- Supported by Poly Lens.

IDEAL FOR

Office professionals, frontline staff, and retail clerks who need a modern and reliable wired telephone



POLY EDGE B10

- 2 line keys; 8 lines supported.
- Poly HD Voice and hands-free speakerphone with proven acoustic echo cancellation and background noise suppression technology.
- Lightbar status indicator.
- Illuminated mute, headset, speaker buttons.
- Easy installation on desk or wall with 2-position desk stand and included wall mount hardware.
- PSU in-box.
- Supported by Poly Lens.

IDEAL FOR

Knowledge workers and managers who place a moderate amount of calls or small offices who desire multi-line key system configurations



CUSTOMER FAVORITE

VVX 450

- 12-line, performance IP desk phone with color display.
- Award-winning audio with Poly HD Voice and Poly Acoustic Fence.
- Supports USB and RJ9 connected headsets.
- Dual 10/100/1000 Ethernet ports and Wi-Fi support with optional OBiWiFi5G USB adapter.
- Integrated Microban® antimicrobial product protection and ENERGY STAR certified.
- Easily managed ensuring devices are up and running with maximum efficiency.
- Supported by Poly Lens.



IDEAL FOR

Knowledge workers whose work demand reliable connectivity and who place a moderate volume of calls



VVX 350

- Six-line, mid-range IP desk phone with color display.
- Award-winning audio with Poly HD Voice and Poly Acoustic Fence.
- Supports USB and RJ9 connected headsets.
- Dual 10/100/1000 Ethernet ports and Wi-Fi support with optional OBiWiFi5G USB adapter.
- Integrated Microban® antimicrobial product protection and ENERGY STAR certified.
- Supported by Poly Lens.



IDEAL FOR

Office professionals, frontline staff, and retail clerks who need a reliable wired telephone



VVX 250

- Four-line, basic IP desk phone with color display.
- Award-winning audio with Poly HD Voice and Poly Acoustic Fence.
- Supports USB and RJ9 connected headsets.
- Dual 10/100/1000 Ethernet ports and Wi-Fi support with optional OBiWiFi5G USB adapter.
- Integrated Microban® antimicrobial product protection and ENERGY STAR certified.
- Supported by Poly Lens.



IDEAL FOR

Lobbies and common area users who place few calls and need reliable voice connectivity

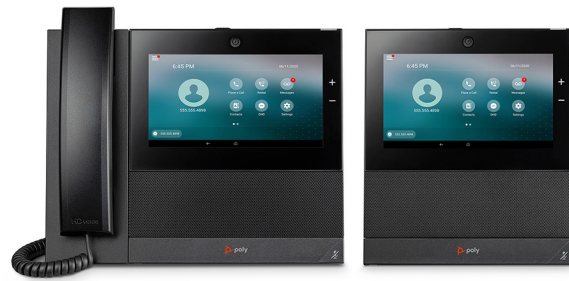


VVX 150

- Two-line, entry-level IP desk phone featuring Poly HD Voice and Poly Acoustic Fence.
- Supports RJ9 connected headsets (no USB).
- 1 x 10/100 Ethernet port.
- Desk stand/wall mount bracket included.
- Certified for Google Voice for G Suite.
- Integrated Microban® antimicrobial product protection and ENERGY STAR certified.
- Easily managed ensuring devices are up and running with maximum efficiency.
- Supported by Poly Lens.

IDEAL FOR

Managers and executives who want integrated video calling

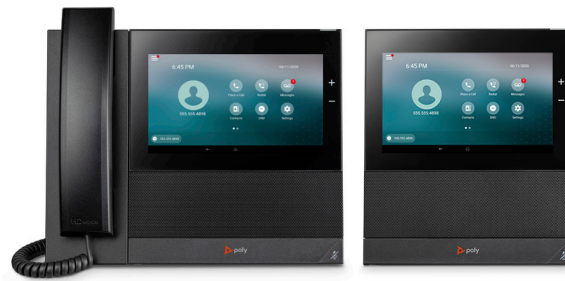


CCX 700

- Video with integrated 4 megapixel camera, autofocus, privacy shutter.
- 7-inch multi-touch LCD display, 2 USB ports (type A and type C), integrated Bluetooth and Wi-Fi.
- Crystal clear sound with Poly HD Voice, Acoustic Fence and NoiseBlockAI technologies
- Dedicated applications button.
- Your choice of handset model or no handset model for use with headset.
- Easily managed ensuring devices are up and running with maximum efficiency.
- Supported by Poly Lens.

IDEAL FOR

Managers and executives who want a larger screen



CCX 600

- 7 inch multi-touch LCD display, 2 USB ports (type A and type C), integrated Bluetooth and Wi-Fi.
- Dedicated Applications button or Microsoft Teams button.
- Add video with optional EagleEye Mini camera (Zoom mode only).
- Crystal clear sound with Poly HD Voice, Acoustic Fence and NoiseBlockAI technologies
- Your choice of handset model or no handset model for use with headset.
- Microsoft Teams and Open SIP models available.
- Supported by Poly Lens.

IDEAL FOR

Knowledge workers



CCX 500

- 5 inch multi-touch LCD display, 2 USB ports (type A and type C), integrated Bluetooth.
- Dedicated Applications button or Microsoft Teams button.
- Crystal clear sound with Poly HD Voice, Acoustic Fence and NoiseBlockAI technologies
- Your choice of handset model or no handset model for use with headset.
- Microsoft Teams and Open SIP models available.
- Supported by Poly Lens.

IDEAL FOR

Office workers (Open SIP, Microsoft Teams) or
common area phones (Microsoft Teams)



CCX 400

- 5 inch multi-touch LCD display; 1 x type A USB port.
- Crystal clear sound with Poly HD Voice, Acoustic Fence and NoiseBlockAI technologies
- Microsoft Teams and Open SIP models available.
- Easily managed ensuring devices are up and running with maximum efficiency.
- Supported by Poly Lens.
- Optional wall mount kit is available for wall mounting use cases.

ON THE GO



ON THE GO

BLUETOOTH WIRELESS HEADSETS

IDEAL FOR

Professionals who work in distracting environments, on the go or in the office/home office



VOYAGER 8200 UC

- Boomless, dual-paired, omni-directional microphones with enhanced digital signal processing (DSP).
- Dual-mode active noise canceling (ANC) lets you choose your preferred noise-reduction level.
- Smart sensors route, auto-answer, and auto-mute calls.
- Zoom compatible.
- Simple app for personal settings, software updates, support, health and wellbeing.
- Supported by Poly Lens.

IDEAL FOR

Office and remote professionals who need a comfortable Bluetooth neckband headset with earbuds



VOYAGER 6200 UC

- Boomless design features four omni-directional microphones and active noise canceling (ANC).
- Comfort-fit earbuds deliver hi-fi stereo.
- Neckband vibrates to alert you to incoming calls.
- Pairs with up to eight devices and connects to two simultaneously.
- Zoom compatible.
- Supported by Poly Lens.

IDEAL FOR

Mobile professionals who need a discreet, portable Bluetooth headset



CUSTOMER FAVORITE

VOYAGER 5200 UC

- All-day comfort, discreet wearing style.
- Clear and professional communication.
- Connect to your PC/Mac with the USB adapter or mobile phone with Bluetooth.
- Portable charging case for powering up anytime, anywhere.
- Zoom compatible.
- Supported by Poly Lens.

IDEAL FOR

Ideal for enterprise professionals who split time between corporate office, home office, and travel



POLY SYNC 20

- Plug-and-play USB with convenient cord management.
- Bluetooth adapter option for cordless connectivity to PC (Poly Sync 20+).
- Built in Bluetooth for mobile phone connectivity.
- Up to 20 hours of talk time.
- Ability to charge mobile phone.
- Simple app for personal settings, software updates, support, health and wellbeing.
- Supported by Poly Lens.

IDEAL FOR

Telecommuters needing a plug-and-play USB speakerphone



CALISTO 3200

- Plug-and-play USB connection with convenient cord management.
- Amazing audio quality with full-duplex audio, 360-degree room coverage, and dynamic mute alert.
- Compact and portable with included carrying case.
- Zoom compatible.

IDEAL FOR

Shift-based users who need to communicate throughout their workplace



IDEAL FOR

Mobile workers who need full access to business phone features around the office



POLY ROVE FAMILY

- Wireless DECT™ IP phone solution comprised of handsets, base stations, and a repeater.
- Scalable solution capable of supporting 1-1,000 handsets. Support up to 20 handsets and 10 concurrent calls per Poly Rove B2 base station or up to 30 handsets and 8 concurrent calls per Poly Rove B4 base station.
- Up to 18 hours talk time and up to 300 hours standby.
- Wireless range up to 50 m/165 ft indoors and up to 300 m/980 ft outdoors.
- Integrated Microban® antimicrobial product protection and ruggedized IP65- rated handsets.

VVX D230

- Expandable solution supporting up to 10 handsets per base station, 8 lines and 8 simultaneous calls.
- Desk phone-like features in portable device.
- Up to 10 hours talk time and up to 100 hours standby.
- Wireless range up to 50 m/165 ft indoors and up to 300 m/980 ft outdoors.
- Certified for Google Voice for G Suite.

HUDDLE SPACE



IDEAL FOR

Huddle rooms that need an all-in-one video solution



POLY STUDIO X30

- Cloud video apps such as Zoom and Microsoft Teams built right in – no PC or Mac required.
- Use open standards to connect to nearly any cloud video service.
- Block out audio distractions with NoiseBlockAI.
- 4K Ultra HD capable.
- Production-quality camera framing and tracking.
- Easily managed ensuring devices are up and running with maximum efficiency.
- Supported by Poly Lens.

IDEAL FOR

Huddle rooms that need to connect to multiple Video-as-a-Service (VaaS) platforms over USB



POLY STUDIO

- The best audio quality in its class.
- Automatic speaker tracking.
- Centrally managed to ease the burden on IT.
- Simple USB connection to a PC or Mac to use with any video app or cloud service.
- Easily managed ensuring devices are up and running with maximum efficiency.
- Supported by Poly Lens.

IDEAL FOR

Flexible/huddle rooms needing a USB/Bluetooth smart speakerphone



POLY SYNC 40

- Connect to PC via combined USB-A and USB-C cable; smartphone via Bluetooth.
- Bluetooth adapter option for cordless connectivity to PC (Poly Sync 40+).
- Three-microphone steerable array.
- High-performance, large speaker with up to 2.5 m/8 ft mic pickup.
- Up to 30 hours of portable use.
- Simple app for personal settings, software updates, support, health and well-being.
- Supported by Poly Lens.

IDEAL FOR

Smaller rooms requiring exceptional audio conferencing quality



TRIO 8300

- Legendary voice quality and up to 3.7 m/12 ft of pickup.
- Meeting initiation with one-touch join.
- Allows connectivity to multiple SIP platforms at once.
- Audio connectivity for mobile devices.
- Supported by Poly Lens.

IDEAL FOR

Smaller rooms or offices needing an analog speakerphone



VOICESTATION 300

- 360-degree room coverage with up to 2 m/7 ft mic pickup.
- Features Poly Acoustic Clarity and dynamic noise reduction for clear, natural audio fidelity.
- Easy to use and install—connects into any analog phone jack.

CONFERENCE ROOM



CONFERENCE ROOM

VIDEO SYSTEMS

IDEAL FOR

Mid-size to large rooms that need to connect to Microsoft Teams Rooms



POLY STUDIO LARGE ROOM KIT FOR MICROSOFT TEAMS ROOMS

- Designed to deliver clutter-free Teams meeting room experience.
- Smart camera experiences driven by Poly DirectorAI with Studio E70 camera so everyone is seen clearly.
- 8-inch touch console also supports HDMI content and USB port.
- Add a certified Trio phone or Poly-tested DSP compatible device.
- Supported by Poly Lens.

IDEAL FOR

Small to mid-size rooms that need to connect to Microsoft Teams Rooms



POLY STUDIO SMALL AND MEDIUM ROOM KIT FOR MICROSOFT TEAMS ROOMS

- Designed to deliver clutter-free Teams meeting room experience.
- Dynamic video with speaker tracking camera.
- Powerful Poly signature audio covering 12 ft/3.6 m mic pickup range.
- Stereo speakers with room-filling audio, ideal for small to midsize rooms.
- 8-inch touch console also supports HDMI content and USB port.
- Supported by Poly Lens.

IDEAL FOR

Ideal for focus rooms that need to connect to Microsoft Teams Rooms



POLY STUDIO FOCUS ROOM KIT FOR MICROSOFT TEAMS ROOMS

- Designed to deliver clutter-free Teams meeting room experience, ideal for focus rooms with 1-2 people.
- Dynamic video with personal auto-framing.
- Powerful Poly signature audio with NoiseBlockAI and Acoustic Fence technology.
- Single speaker optimized for voice quality, ideal for focus rooms
- 8-inch touch console also supports HDMI content and USB port.
- Supported by Poly Lens.

CONFERENCE ROOM

VIDEO SYSTEMS

IDEAL FOR

Medium to large rooms needing custom designed video conferencing



POLY G7500

- 4K Ultra HD video and content resolution.
- Select from flexible cameras and microphone options to match the room requirements.
- Poly NoiseBlockAI and Acoustic Fence technology keep out audio distractions.
- Simplified setup with USB camera support and Ethernet cabling for microphones.
- Supported by Poly Lens.

IDEAL FOR

Medium to large conference rooms that need all-in-one video conferencing



POLY STUDIO X70

- Dual cameras with 4K lenses.
- Two-way stereo speakers, aluminum cone tweeters, and advanced bass ports.
- Pinpoint-accurate speaker tracking and group framing from Poly DirectorAI technology.
- NoiseBlockAI noise reduction technology.
- Supported by Poly Lens.



IDEAL FOR

Small to mid-size rooms that need all-in-one video conferencing



POLY STUDIO X50

- Cloud video apps such as Zoom and Microsoft Teams built right in – no PC or Mac required.
- Use open standards to connect to nearly any cloud video service.
- Dual display support to see people and content in full size.
- 4K Ultra HD capable.
- Production quality automatic group framing, speaker framing and presenter tracking.
- Easily managed ensuring devices are up and running with maximum efficiency.
- Supported by Poly Lens.

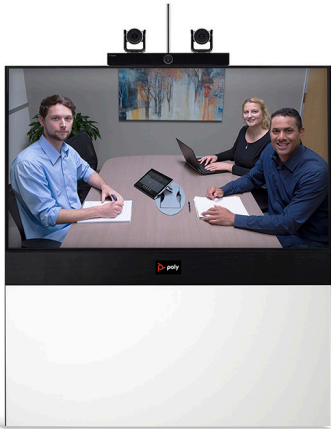


CONFERENCE ROOM

COMPLETE SOLUTIONS

IDEAL FOR

Mid- to large-size rooms that need simple-to-deploy video



MEDIALIGN

- Unmatched user experience with hands-free camera operation, simple touch interface control, and audio innovations to eliminate distractions.
- Works with the broadest array of UC networks.
- Straightforward, all-in-one package for easy global deployment.
- High-definition video conferencing—experience meetings with lifelike color and detail.

IDEAL FOR

Fortune 500 companies that want a fully immersive, mid-size video room



REALPRESENCE IMMERSIVE STUDIO FLEX

- Stunning video quality upscaled to 4K on super-thin bezel 65" displays for superior realism.
- Surprisingly affordable solution delivering an immersive experience without breaking your budget.
- Flexible purchase options so you can tailor the system to your needs and budget.

CONFERENCE ROOM

AUDIO

IDEAL FOR

Large and mid-size rooms requiring the best audio conference experience, with versatile options controlling Poly video conferencing solutions



TRIO C60

- Poly signature audio with 22 kHz audio, up to 6 m/20 ft mic pickup range.
- Meeting initiation in seconds with one-touch join.
- BYOD support via USB, Bluetooth, IP.
- Wi-Fi audio conferencing 2.4-5GHz (MIMO).
- Daisy-chain up to three conference phones for extra-large and unique spaces.
- Pairs with Poly Studio X family and Poly G7500 video solutions.
- Easily managed ensuring devices are up and running with maximum efficiency.
- Supported by Poly Lens.

Check for regional availability.

IDEAL FOR

Larger rooms requiring the best conference phone performance with a simple touch interface



TRIO 8800

- Legendary voice quality with 22 kHz audio, up to 6 m/20 ft pickup range.
- Meeting initiation with one-touch join.
- Connect to multiple UC&C cloud services simultaneously.
- BYOD support via USB, Bluetooth, IP.
- Wi-Fi audio conferencing 2.4-5GHz.
- Optional accessories available for adding video conferencing capability.
- Supported by Poly Lens.

IDEAL FOR

Mid-size rooms requiring robust audio conferencing with a simple touch interface



TRIO 8500

- Legendary voice quality with 14 kHz audio, up to 4.3 m/14 ft pickup range.
- Meeting initiation with one-touch join.
- Allows connectivity to multiple platforms.
- Audio connectivity from a mobile device (USB, Bluetooth).
- Optional accessories available for adding video conferencing capability.
- Supported by Poly Lens.

CONFERENCE ROOM

AUDIO

IDEAL FOR

Small to mid-size conference rooms where users bring their own laptops/smartphones



POLY SYNC 60

- Connect to PC via combined USB-A and USB-C cable, smartphone via Bluetooth.
- Six-microphone steerable array.
- High-performance, twin speakers with up to 3 m/10 ft mic pickup.
- Always on with AC power.
- Two units can be paired wirelessly for larger meeting spaces.
- Two USB ports for smartphone charging.
- Simple app for personal settings, software updates, support, health and wellbeing.
- Supported by Poly Lens.

IDEAL FOR

Small to mid-size conference rooms needing analog conferencing



SOUNDSTATION2

- 360-degree microphones with up to 3 m/10 ft pickup range ideal for small- and mid-size conference rooms.
- Poly Acoustic Clarity and Dynamic Noise Reduction technology for remarkable voice quality.
- Easy installation and use from standard telephone lines—no technical knowledge required.
- Applications port, which connects to mobile phones for dialing from rooms without an analog phone line, or to a PC for Internet calling.

CONFERENCE ROOM CAMERAS

IDEAL FOR

Medium to large rooms looking for advanced camera tracking algorithms for group framing and speaker tracking



POLY STUDIO E70

- Dual cameras with 4K sensors.
- Pinpoint-accurate speaker framing and group framing from Poly DirectorAI technology.
- Motorized, integrated electronic privacy shutter.
- Beam forming microphone array for advanced audio features.
- Easily managed ensuring devices are up and running with maximum efficiency.
- Supported by Poly Lens.

IDEAL FOR

Small to mid-size rooms looking for speaker tracking and analytics



EAGLEEYE PRODUCER

- High-definition capture of up to 1080p60.
- Ideal for small- to mid-size rooms, giving users an affordable telepresence experience without manual intervention.
- Continually monitors room activity, automatically frames participants, and provides powerful analytical data.

CONFERENCE ROOM

INSTALLED AUDIO

IDEAL FOR

Larger spaces that need advanced, configurable conferencing in acoustically challenging rooms



SOUNDSTRUCTURE

- Installed audio solution solving acoustical challenges from the conference room to the auditorium.
- Easy installation and configuration, even for very large or complex collaboration systems with SoundStructure Studio configuration software and Poly OBAM (one big audio matrix).
- Unrivaled Stereo Acoustic Echo Cancellation (AEC).
- Breakthrough feedback elimination enables more flexible microphone, talker, and loudspeaker placements, as well as speech reinforcement.



CALL CENTER

AT HOME OR IN THE OFFICE

IDEAL FOR

Call center employees who need a premium all-day headset



ENCOREPRO 700 SERIES

- Extendable boom for maximum voice pickup and noise-cancelling.
- Premium materials provide strength and all-day comfort.
- High-quality wideband stereo audio support with SoundGuard Digital hearing protection (USB only).
- USB and QD models available for ultimate flexibility in connection.

IDEAL FOR

Call center employees who need an all-day headset



ENCOREPRO 500 SERIES

- Aircraft-grade aluminum joints; unibody boom construction.
- Audible and visual cues for optimal boom positioning.
- High-quality wideband audio support with SoundGuard hearing protection.
- USB and QD models available for ultimate flexibility in connection.

IDEAL FOR

Call center employees who need a cost sensitive all-day headset



ENCOREPRO 300 SERIES

- Flexible noise-canceling microphone boom.
- Voice-optimized frequency response for clearer conversations.
- Unique dynamic mute alert (USB only).
- Acoustic protection with G616 and TWA (USB only).
- Hi-fi stereo for media playback (USB only).
- USB and QD models available for ultimate flexibility in connection.

IDEAL FOR

Connecting headsets to PC softphones in call centers



DA SERIES

- Call controls and Quick Disconnect for walkaway convenience.
- Superior noise and echo cancellation for richer, clearer conversations.
- USB-A and USB-C on the same cable.
- Simple app for personal settings.
- Supported by Poly Lens.

IDEAL FOR

Call centers integrating desk phones and PC based applications



MDA500 QD SERIES

- Allows customer service representatives to take calls on desk phones or softphones.
- Comprehensive desk phone compatibility with electronic hook switch (EHS) integration.
- Superior noise and echo cancellation.
- Independent volume and mute and call answer/end controls at your fingertips.
- Visual mute and call status indicators.

IDEAL FOR

Office-based and call center professionals who require continuous battery life and the ability to move throughout the office



VOYAGER 4245 OFFICE

- The lightest Bluetooth headset for contact center use.
- Three wearing options in a single SKU.
- Wireless range up to 328 ft/100 m.
- Continuous battery life*.
- Noise-canceling microphone.
- Microsoft Teams version with dedicated Teams button for instant access.

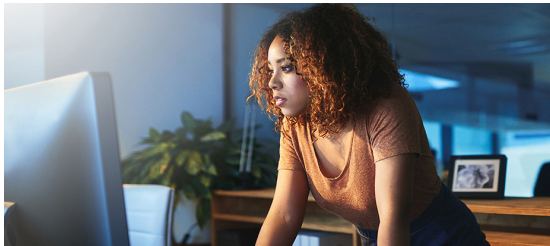
* Use of spare charged battery required



IT TOOLS

IDEAL FOR

Enterprises needing cloud-based insights and management of Poly's latest voice, video, and headsets.

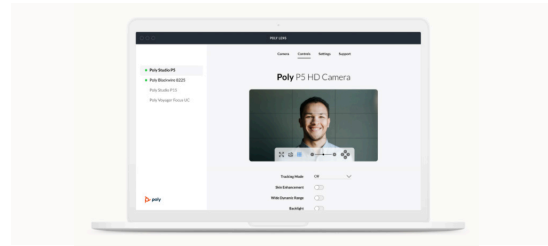


POLY LENS

- Quick and easy device onboarding.
- Single Sign-on for easy account access.
- Intelligent news-feed like device highlights identifying the most important actions and insights.
- Multi-view, comprehensive inventory tables with filters.
- Individual or bulk management through device policy provisioning.
- Efficient cloud service requires no capital expense purchasing, powering and maintaining servers.

IDEAL FOR

End user and enterprise IT alike. Poly Lens App puts the power of customization, self-help, and wellness in the hands of the end user while enabling IT to provide software updates, policy application, and remote troubleshooting when needed.



POLY LENS APP

- In-app customization for personal device settings to meet your collaborative needs and workstyle.
- Built-in notices for software availability.
- Customized reminders to stay healthy throughout the day.
- Focus audio for a more productive you.
- Included self-help guides, support information tools to minimize disruption to your workday.

IDEAL FOR

Any organization that needs a private all-in-one voice, video and content meeting platform



POLY CLARITI

- Lower TCO through innovative software that lowers compute requirements while adding high-scale calling.
- Included video app improves accessibility from your device of choice.
- Centralized control for monitoring, updating, and troubleshooting your private instance.
- Easy-schedule, easy-join with a click.

IDEAL FOR

Enterprises needing video interoperability with Microsoft Teams



REALCONNECT



- Cloud-based video interoperability service connecting endpoints and software apps into Microsoft Teams.
- Leverage standards-based video end points to make the most of your investment.
- Simplified meeting entry via Exchange and Outlook integration with one-touch dial.
- Available as stand alone cloud service or part of Poly Clariti.

SUPPORT, PROFESSIONAL AND MANAGED SERVICES

IDEAL FOR

IT directors who need help realizing the benefits underpinning their UC business case

PLAN & DESIGN

- Plan the optimal solution to reduce deployment risks.
- Plan and design a solution aligned to your business objectives.
- Have peace of mind that your UC strategy is aligned for future business requirements.
- Drive adoption to realize the benefits which underpin your business case.
- Flexible capability supported by a multi-disciplinary team of consultants capable of delivering in the most demanding environments.

IDEAL FOR

IT directors looking to convert their plan into reality and quickly achieve the anticipated benefits

DEPLOYMENT

- Ability to support proof of concepts to demonstrate the solution working in your environment.
- Seamless migration from proof of concept into your production environment.
- Expedite your return on investment by adding Poly experts to your team to fill any capability gaps.
- Remote and onsite options available for voice and video.

IDEAL FOR

IT directors who want to extract additional value from your existing investments

OPTIMIZATION

- Optimize your communication and collaboration solutions so they perform at the highest level.
- Troubleshoot challenges with your wider environment such as network, security, or your cloud platform(s) of choice.
- Family of off-the-shelf business apps to improve end user productivity and streamline administration tasks.

IDEAL FOR

IT pros and leaders looking to maximize the value of their headset investment

HEADSET SERVICES

- A suite of services for better planning, headset deployment, adoption, longevity, and replacement.
- Minimize wireless interference in workspaces with density analysis.
- Smooth installation and deployment, with end user assistance to accelerate adoption and productivity.
- Maximize headset life and accurately manage inventory.

IDEAL FOR

IT professionals responsible for collaboration solutions, and for the prosumer working from home and looking for a high quality experience

POLY+

- Unlimited, global 24x7 technical support giving you and your teams help how and when needed.
- Ecosystem Cloud Partner Support improves response times in Poly-enabled ecosystem cloud solutions.
- Advance hardware replacement means that you can replace your device/s with pre-paid next business day shipping, ensuring business continuity.
- Exclusive professional services discounts available to save your business time and money with special discounts.
- Experience upgraded access to premium features elevating your collaborative experience with IT tools, device-specific enhancements, and capabilities all delivering a superior user experience and greater adoption across your entire enterprise.

IDEAL FOR

IT directors looking to outsource the hosting and day-to-day managing of their UC solutions

MANAGED SERVICES

- Remotely monitor and manage the performance of your collaboration solution.
- Provide predictable network reliability, availability, and security for your mission critical collaboration solution.
- End-to-end, turnkey solution for Microsoft Teams and Zoom.
- 24x7 global coverage.
- Private hosted options available.

Worldwide Corporate Headquarters

345 Encinal Street
Santa Cruz, California 95060

Toll-Free: 800-544-4660

Phone: 831-426-5858

Fax: 831-426-6098

Questions: poly.com/contact

How to buy: poly.com/contact-sales

Learn more online: poly.com

Poly locations around the world: poly.com/office-location